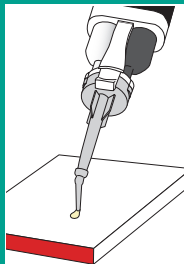


*Precautions for automix



Before inserting mixing tip, check the two openings of the cartridge or bleed small amount of pastes to ensure even flow from the cartridge.

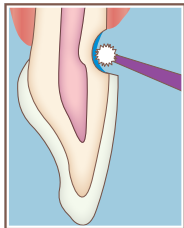
AND



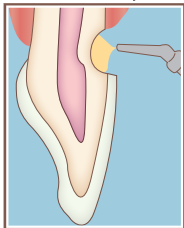
Bleed small amount of the mixed paste on a pad before dispensing the material into the cavity.

GC Fuji® Automix LC TECHNIQUE GUIDE

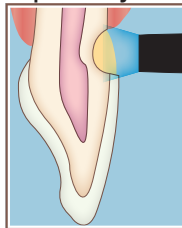
■ Restoration of Class III, V and primary teeth



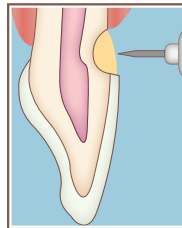
Apply CAVITY CONDITIONER (10 seconds) to remove the smear layer. Rinse and gently dry. Do not dessicate.



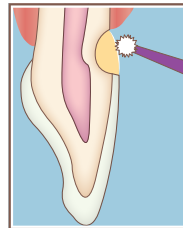
Dispense GC Fuji Automix LC in increments of 2 mm.



Light cure for 20 seconds.

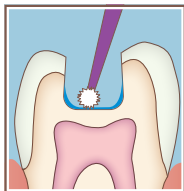


Finish and polish.

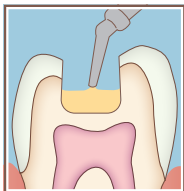


Apply GC Fuji COAT LC, GC Fuji VARNISH or G-COAT PLUS to finished restoration.

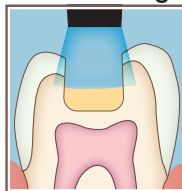
■ Base for Class I and Class II cavities using a sandwich laminate technique.



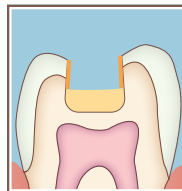
Apply CAVITY CONDITIONER (10 seconds) to remove the smear layer. Rinse and gently dry. Do not dessicate.



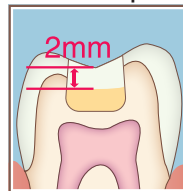
Fill with GC Fuji Automix LC.



Light cure for 20 seconds.



Apply a bonding agent such as G-Premio Bond following manufacturer's instructions.



Fill with a GC restorative composite material.

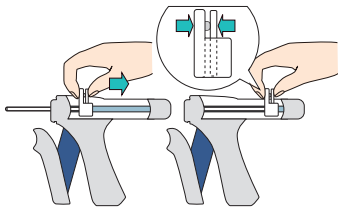


Consult Instructions for Use

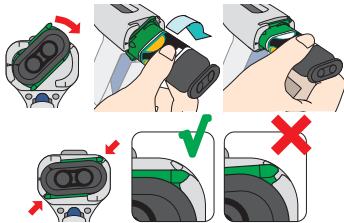


GC CORPORATION
TOKYO, JAPAN

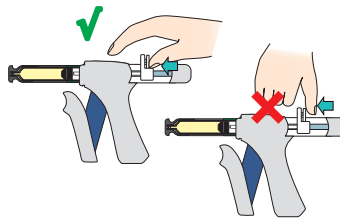
PASTE PAK CARTRIDGE LOADING AND DISPENSING



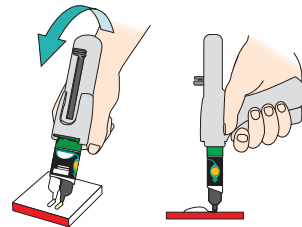
1. Retract piston completely into Dispenser.



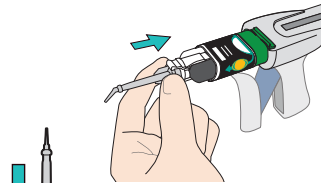
2. Turn cartridge fully to the right position.



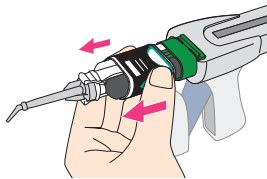
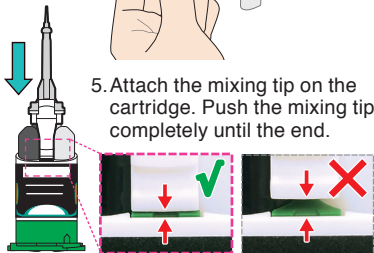
3. Slide piston release forward until it stops. Remove cartridge cover.



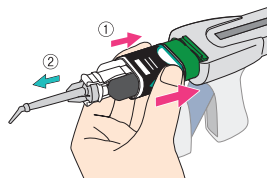
4. Before dispensing for the first time or after a long interval, bleed the pastes from the cartridge.



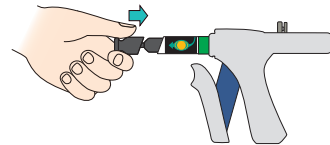
5. Attach the mixing tip on the cartridge. Push the mixing tip completely until the end.



6. Hold the side of sleeve and slide it forward to **LOCK** the mixing tip.



7. After dispensing, slide the sleeve backward (①) and remove mixing tip. (②)



8. Always put the cover back on.